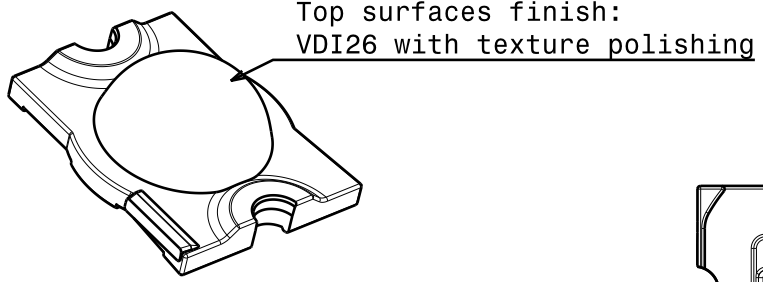


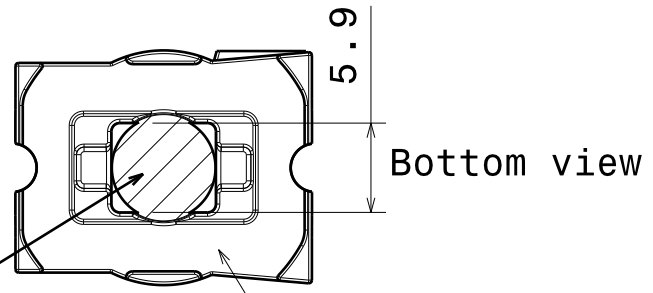
D C B A

4



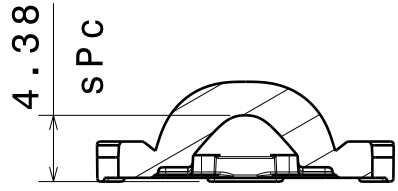
Isometric view

Patterned area finish:
VDI12 with texture polishing

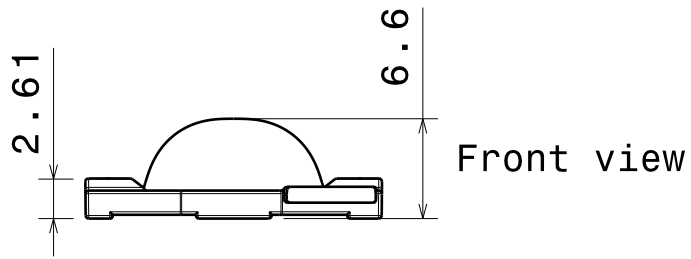


Bottom view

3

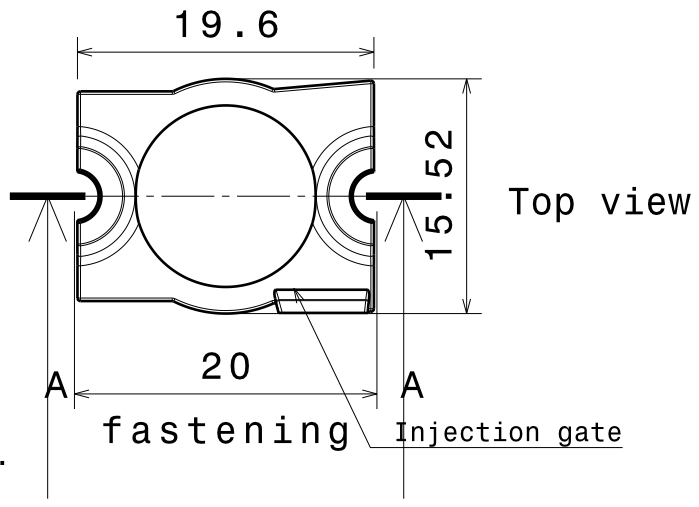


Section view A-A



Front view

2



Top view

MATERIALS
 Lens: PMMA
 Tape: PU Foam, Double sided adhesive
 Tolerances:
 Dimensions +/- 0,1 if not otherwise shown.
 Control for SPC marked dimensions.

Shares top insert with C10966_Strada-C-XR.

Part no. with tape fastening: CA10916 (0.15mm higher)

This drawing is our property.
 It can't be reproduced
 or communicated without
 our written agreement.



Ledil Oy
 Tehdaskatu 13
 FIN-24100 SALO
 Finland

DRAWING TITLE

Drawing Strada-C-GD lens

DRAWN BY
ol

DATE
15.12.2009

CHECKED BY
hh

DATE
15.12.2009

SIZE
A4

DRAWING NUMBER
C10915

REV
1

DESIGNED BY
ol

DATE
15.12.2009

SCALE 2:1

WEIGHT (g)

SHEET

1 / 1

1

1

D A